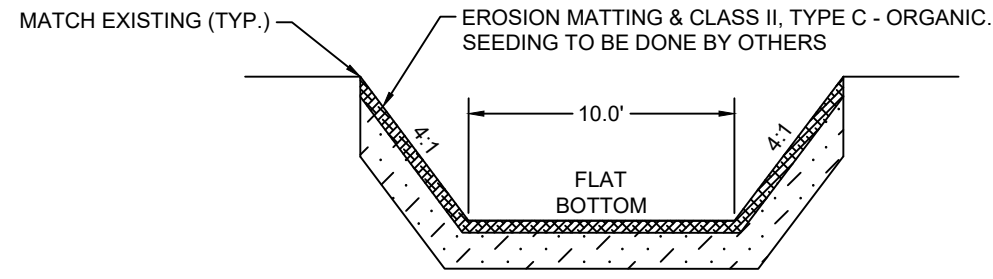
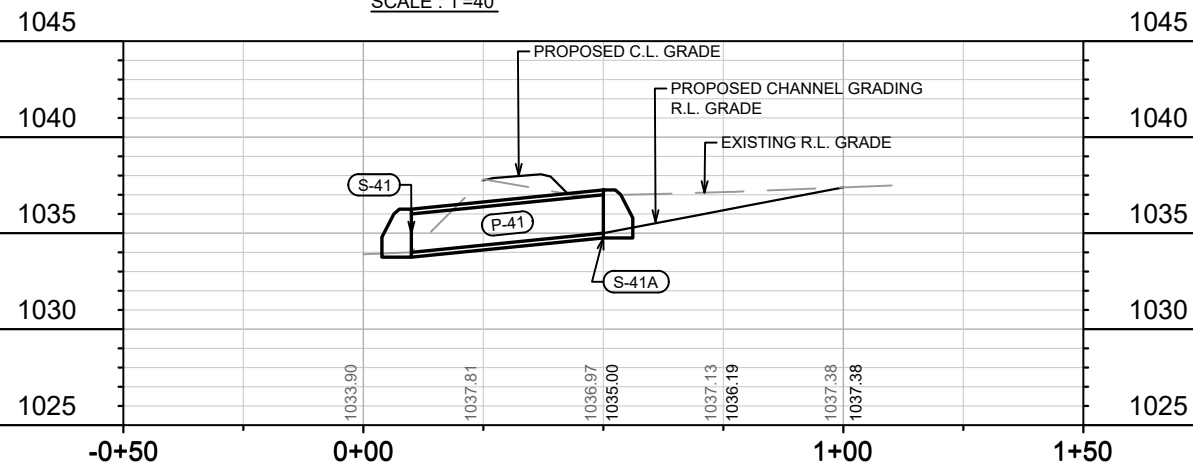
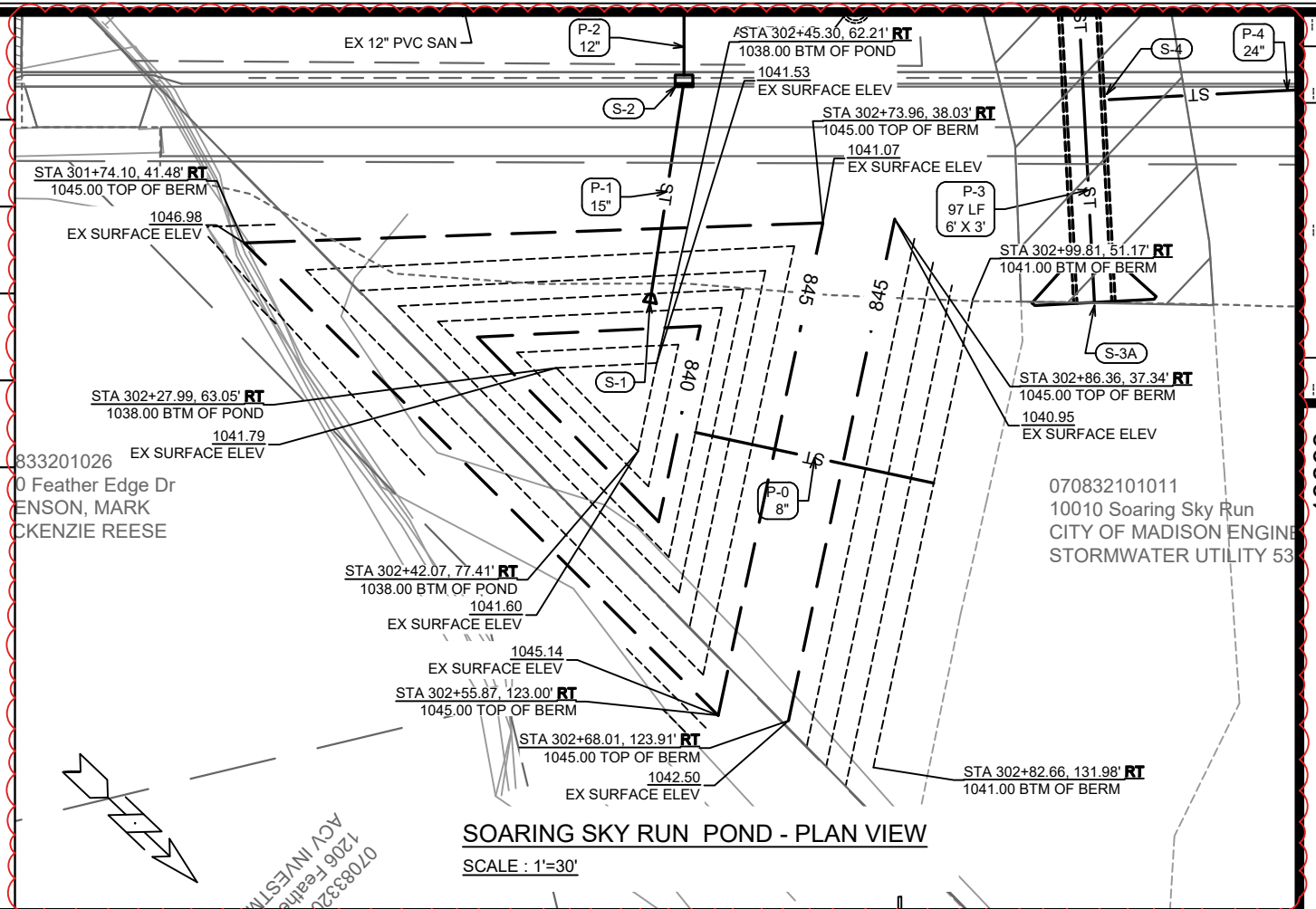


PROFILE VIEW - CHANNEL GRADING AREA

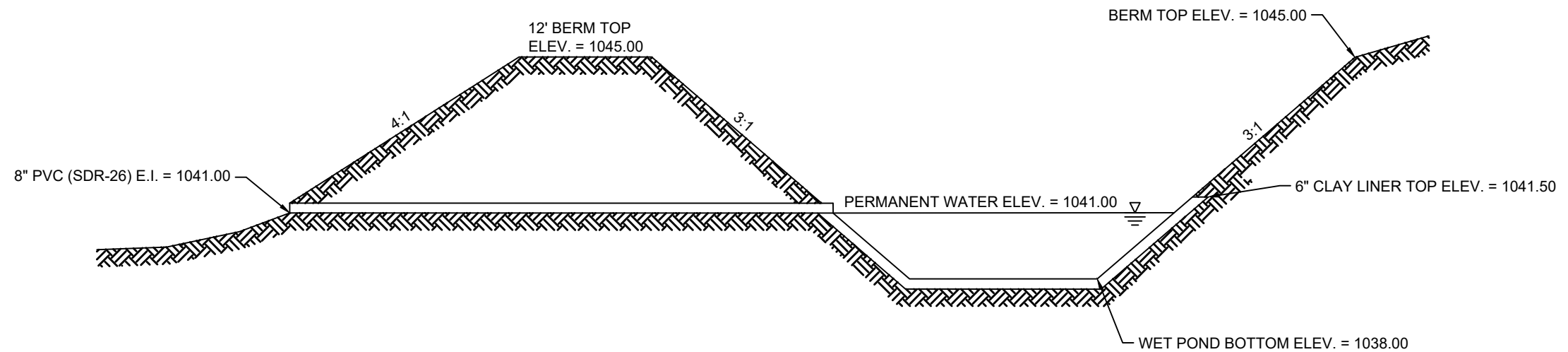
SCALE : 1"=40'



CHANNEL GRADING TYPICAL DETAIL
NO SCALE



SOARING SKY RUN POND - PLAN VIEW
SCALE : 1"=30'



SOARING SKY RUN POND DETAIL - WEST TO EAST PROFILE VIEW
NO SCALE

DATE	BY
4/22/24	KDF
REVISION	
DATE	BY
4/22/2024 9:26 AM	U-15

13893
 8317
 CONTRACT NO:

STORM WATER DETAILS
 BLUE HARVEST LANE, FEATHER EDGE DRIVE, & SOARING SKY RUN ASSESSMENT DISTRICT - 2023 MADISON, WI
 M:\DESIGN\Projects\13893\CAD\Sewers\13893SWR-PipeNetwork.dwg



13893
 U-15

SANITARY SEWER SCHEDULE

+ADDENDUM KDF 4/22/24

BLUE HARVEST, FEATHER EDGE, & SOARING SKY ASSESSMENT DIST - 2023	SHEET NO. U-16
PROJECT NO. 13893 SANITARY SEWER SCHEDULE CITY OF MADISON	

PROPOSED SANITARY STRUCTURES

SAS NO.	STATION	LOCATION (OFFSET)	TOP OF CASTING	E.I.	DEPTH	NOTES
SOARING SKY RUN						
SAS #1	304+00.00	CL	1044.5	1030.20	14.30	[1], [2]

PROPOSED SANITARY PIPES

FROM (DNSTM)	TO (UPSTM)	DWNSTRM E.I.	UPSTRM E.I.	PLAN (PAY) LGTH (FT)	SLOPE (%)	PIPE SIZE	PVC TYPE	NOTES
SOARING SKY RUN								
SAS #1464-006	SAS #1	1029.00	1030.20	120	1.00%	8"	SDR-26	-

SANITARY STRUCTURES ADJUSTMENTS

STRUCTURE ID NO.	STATION	LOCATION (OFFSET)	EX. TOC ELEV.	PROP ELEV.	ADJUST DIFF.	NOTES
SOARING SKY RUN						
SAS #1464-006	302+79.60	RT-1.06	1043.88	1046.17	2.29	[3]
PATH 1						
SAS #1466-001	14+68.22	LT-9.94	1034.70	1036.08	1.38	[3]
SAS #1465-001	19+67.99	LT-10.00	1032.88	1035.48	2.60	[3]
SAS #1465-002	22+82.17	LT-14.98	1032.33	1034.90	2.57	[3]
SAS #1465-003	26+82.33	LT-8.57	1034.38	1038.53	4.15	[3]
SAS #1464-002	30+83.49	RT-9.72	1037.34	1037.85	0.51	-

SANITARY STRUCTURES EXCAVATE, BACKFILL, INSTALL SAS JOINT SEAL

STRUCTURE ID NO.	STATION	LOCATION (OFFSET)	NOTES
SOARING SKY RUN			
SAS #1464-006	302+79.60	RT-1.06	[2]
PATH 1			
+ SAS #1567-020	0+42.82	RT-16.10	[2], 5-FT DIA
+ SAS #1567-025	5+39.50	LT-40.26	[2], 5-FT DIA
+ SAS #1566-010	9+77.33	LT-28.10	[2], 5-FT DIA
+ SAS #1466-001	14+68.22	LT-9.94	[2], 5-FT DIA
+ SAS #1465-001	19+67.99	LT-10.00	[2], 5-FT DIA
+ SAS #1465-002	22+82.17	LT-14.98	[2], 5-FT DIA
+ SAS #1465-003	26+82.33	LT-8.57	[2], 5-FT DIA
+ SAS #1464-002	30+83.49	RT-9.72	[2], 5-FT DIA
+ SAS #1464-003	31+78.86	LT-16.15	[2], 5-FT DIA
+ SAS #1464-004	35+38.81	LT-9.16	[2], 5-FT DIA
+ SAS 31463-001	39+06.43	LT-12.15	[2], 5-FT DIA

SPECIFIC NOTES

- [1] INSTALL RIGID INTERNAL CHIMNEY SEAL IN ACCORDANCE WITH SDD 5.7.17
- [2] INSTALL EXTERNAL SAS WRAP IN ACCORDANCE WITH CITY S.D.D. 5.7.2
- [3] ADJUSTMENT OF CASTING WILL BE PAID UNDER BID ITEM 90071 - REBULD SEWER ACCESS STRUCTURE